

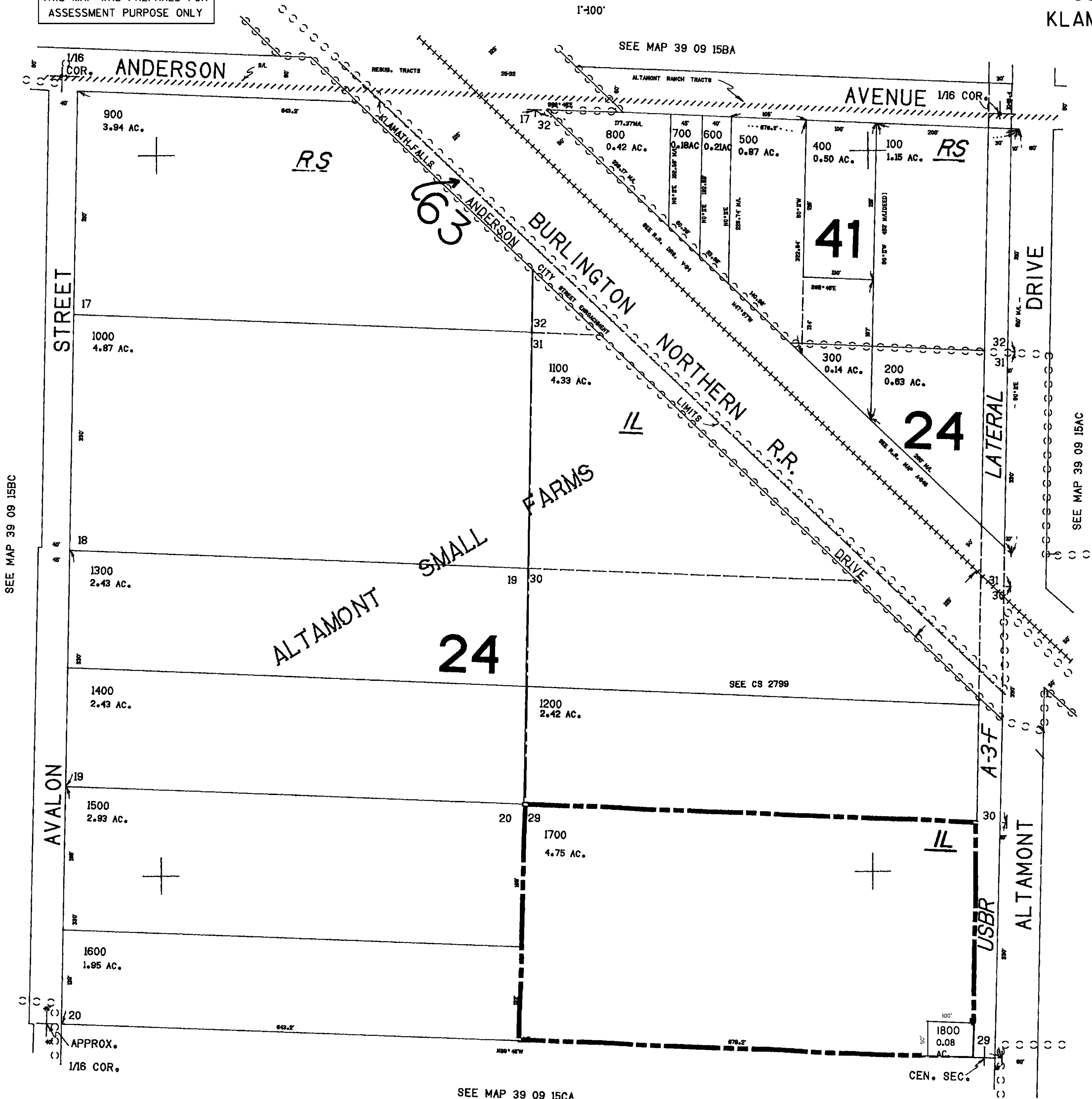
REVISED
3-25-10

THIS MAP WAS PREPARED FOR
ASSESSMENT PURPOSE ONLY

SE1/4 NW1/4 SEC. 15 T.39S. R.09E. W.M.
KLAMATH COUNTY

1"=100'

39 09 15BD
KLAMATH FALLS



39 09 15BD
KLAMATH FALLS