

REVISED 8-19-09

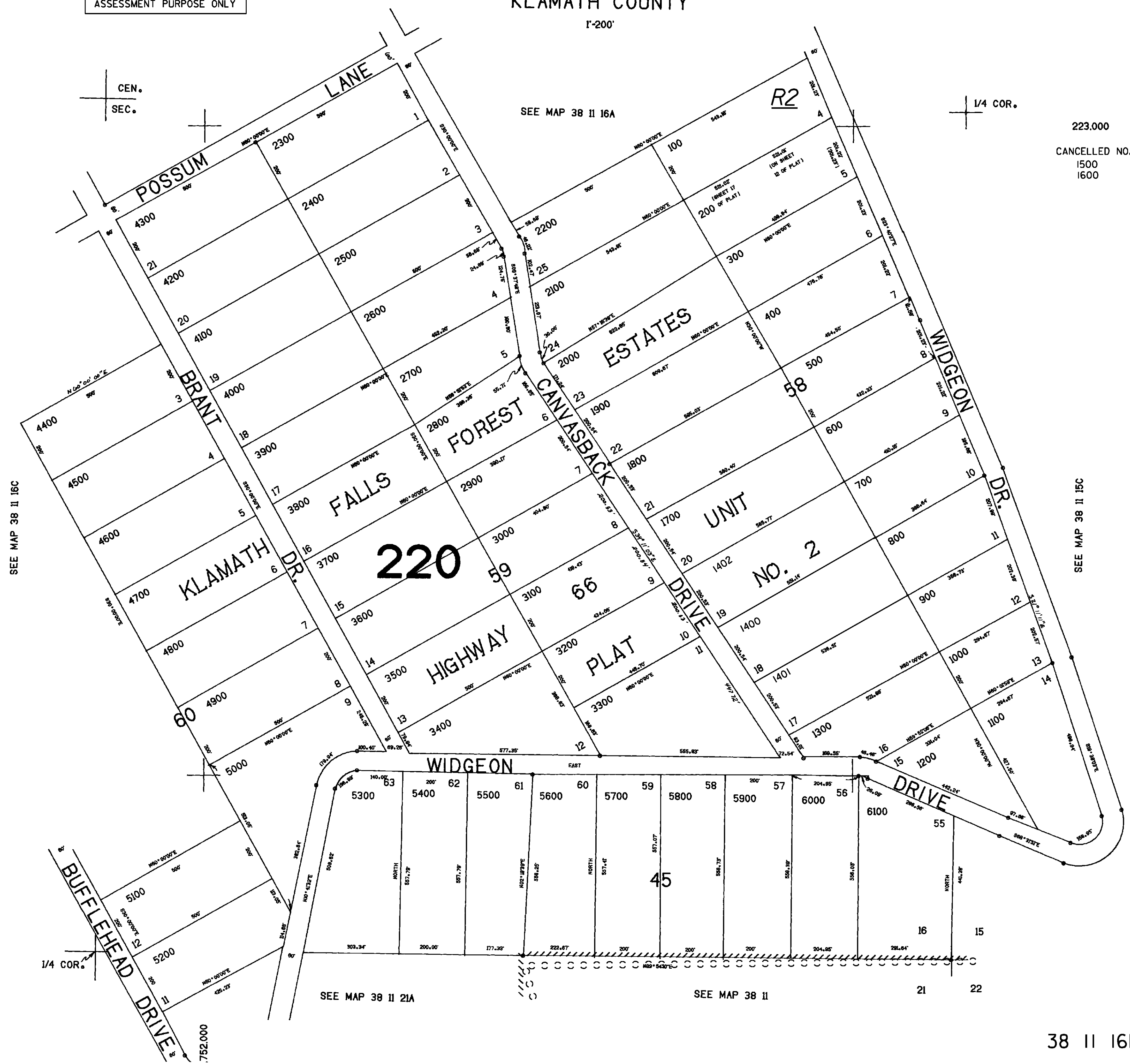
THIS MAP WAS PREPARED FOR  
ASSESSMENT PURPOSE ONLY

SE1/4 SEC. 16 T.38S. R.11E. W.M.  
KLAMATH COUNTY

38 II 16D

1"=200'

223.000  
CANCELLED NO.  
1500  
1600



SEE MAP 38 II 16C

SEE MAP 38 II 15C

SEE MAP 38 II 21A

SEE MAP 38 II

38 II 16D