

THIS MAP WAS PREPARED FOR ASSESSMENT PURPOSE ONLY

NW1/4 SEC. 26 T.37S. R.11E. W.M. KLAMATH COUNTY

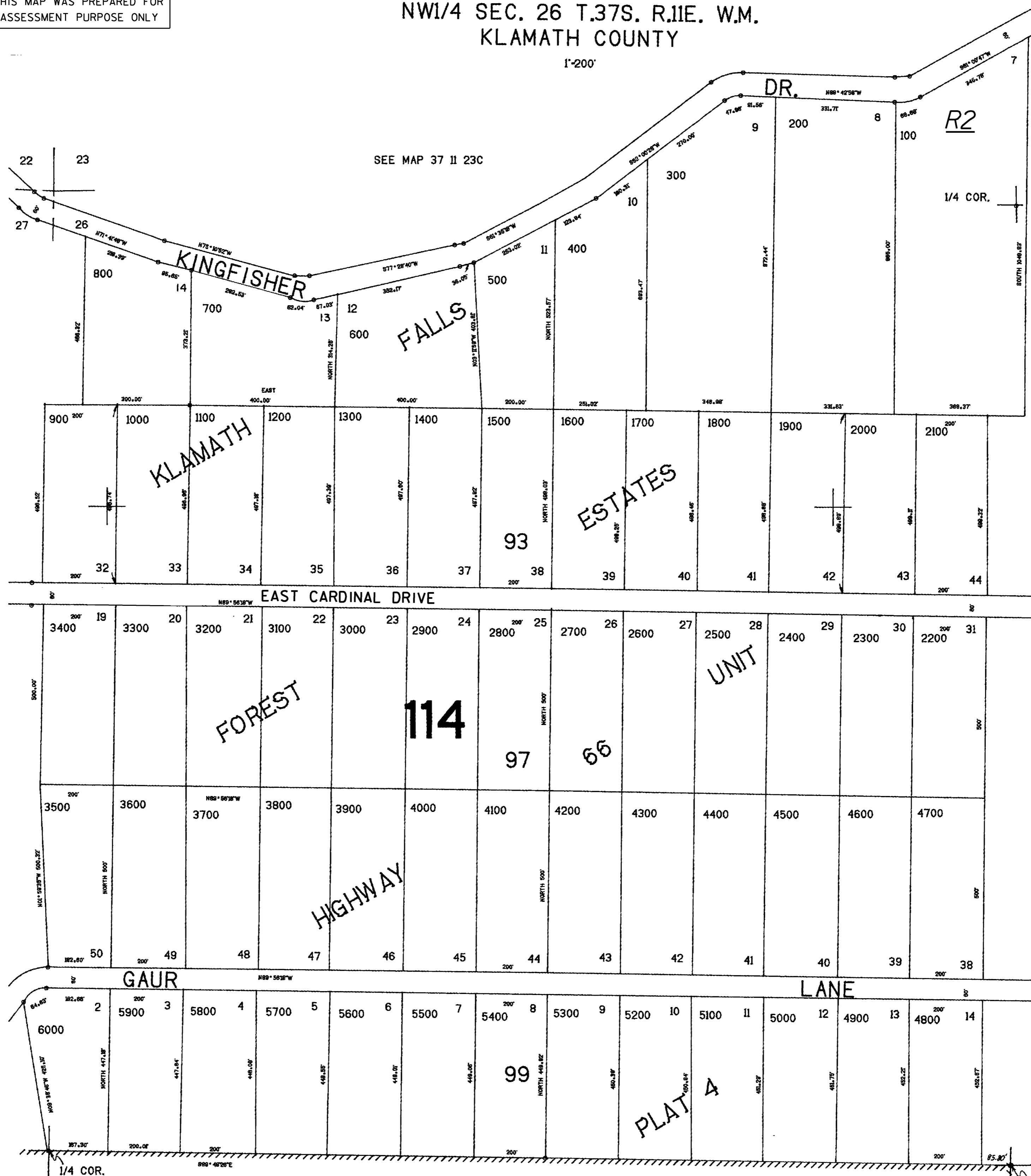
1"=200'

37 II 26B

CANCELLED NO'S 5200 MI

SEE MAP 37 II 27A

SEE MAP 37 II 26A



37 II 26B 244,000

SEE MAP 37 II

CEN. SEC.

2,000