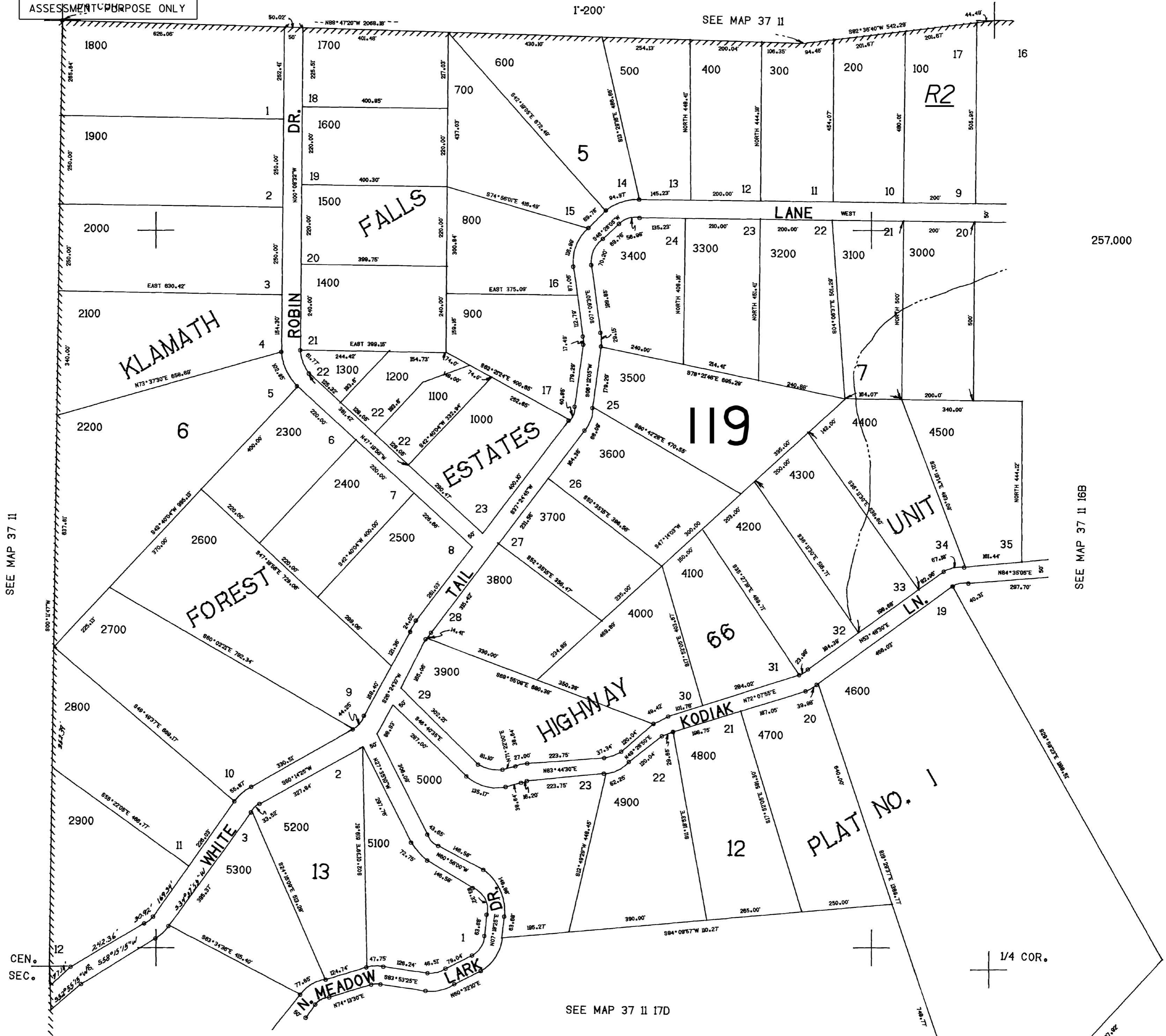


NE1/4 SEC. 17 T.37S. R.11E. W.M.
KLAMATH COUNTY

THIS MAP WAS PREPARED FOR
ASSESSMENT PURPOSE ONLY

1"=200'

SEE MAP 37 11



257.000

SEE MAP 37 11 16B

SEE MAP 37 11 17D

749.000