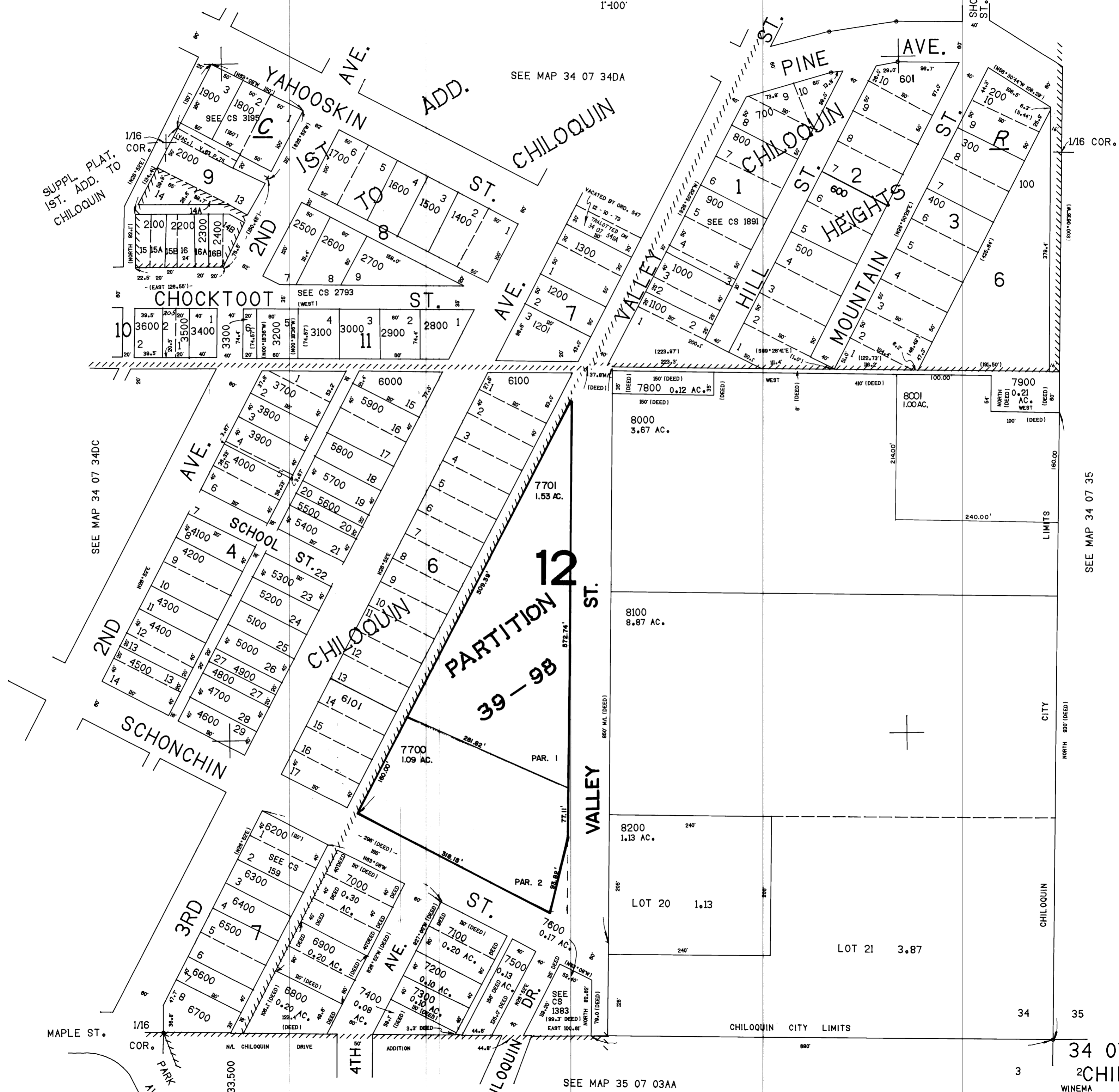


THIS MAP WAS PREPARED FOR ASSESSMENT PURPOSE ONLY.

SE1/4 SE1/4 SEC. 34 T.34S. R.07E. W.M.  
KLAMATH COUNTY

34 07 34DD  
CHILOQUIN

1"=100'



SUPPL. PLAT.  
1ST. ADD. TO  
CHILOQUIN

SEE MAP 34 07 34DA

SEE MAP 34 07 34DC

SEE MAP 34 07 35

SEE MAP 35 07 03AA

334.000

34 35

34 07 34DD  
CHILOQUIN  
WINEMA  
N.E.P.