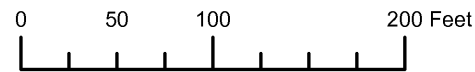


THIS MAP WAS PREPARED FOR ASSESSMENT PURPOSE ONLY

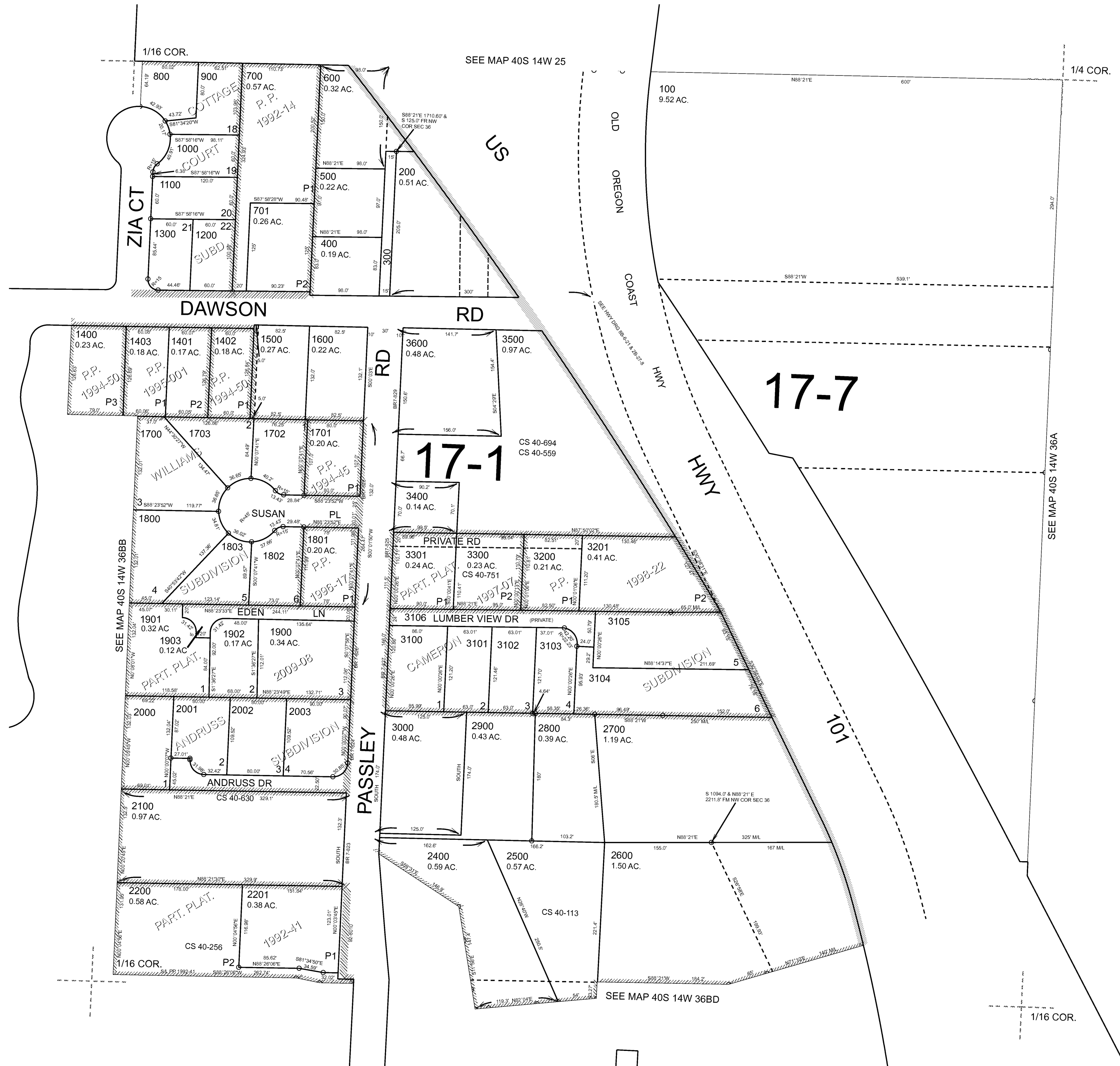


N.E. 1/4 N.W. 1/4 SEC. 36 T.40S. R.14W. W.M. CURRY COUNTY

1" = 100'

40S14W36BA BROOKINGS

CANCELLED: 2300



Revised: RAA 7/7/2009

BROOKINGS 40S14W36BA