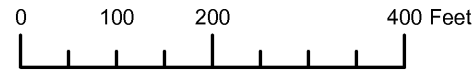


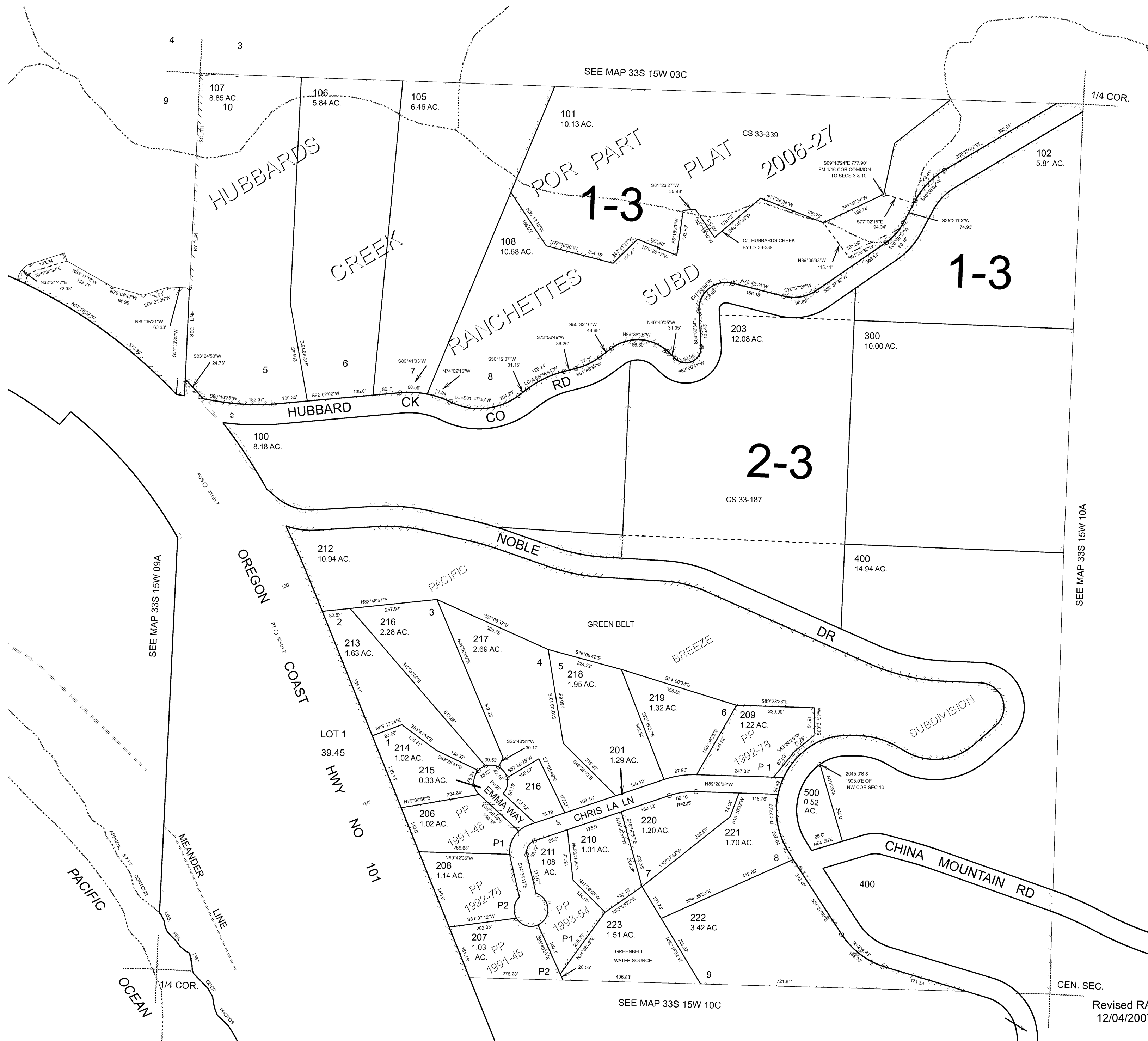
THIS MAP WAS PREPARED FOR ASSESSMENT PURPOSE ONLY



N.W. 1/4 SEC. 10 T.33S. R.15W. W.M. CURRY COUNTY 1" = 200'

33S15W10B

- CANCELLED:
- 103
- 103U1
- 103U2
- 104
- 200
- 202
- 204
- 205



SEE MAP 33S 15W 10A

SEE MAP 33S 15W 09A

SEE MAP 33S 15W 10C

CEN. SEC.

Revised RAA 12/04/2007

33S15W10B