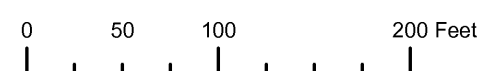


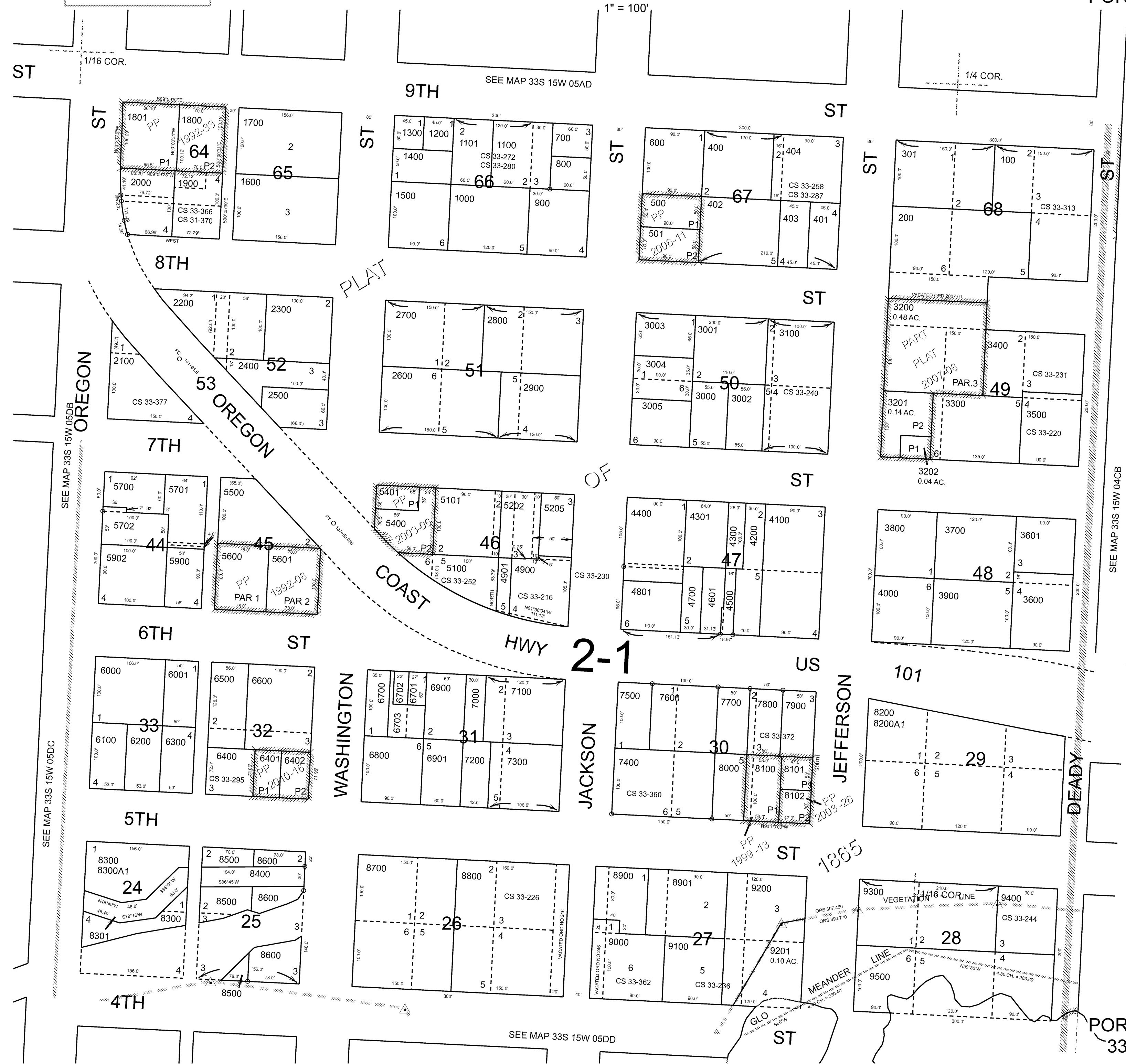
THIS MAP WAS PREPARED FOR ASSESSMENT PURPOSE ONLY



N.E. 1/4 S.E. 1/4 SEC. 5 T. 33S. R. 15W. W.M. CURRY COUNTY

33S15W05DA PORT ORFORD

- CANCELLED:
- 201
 - 300
 - 3401
 - 4600
 - 4602
 - 4800
 - 5000
 - 5001
 - 5200
 - 5201
 - 5203
 - 5204
 - 5300
 - 5703
 - 5800
 - 5801
 - 5901
 - 6704
 - 8300A1
 - 8902
 - 9401



Revised: RA 11/1/2010

PORT ORFORD 33S15W05DA