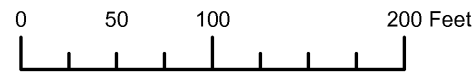


THIS MAP WAS PREPARED FOR ASSESSMENT PURPOSE ONLY

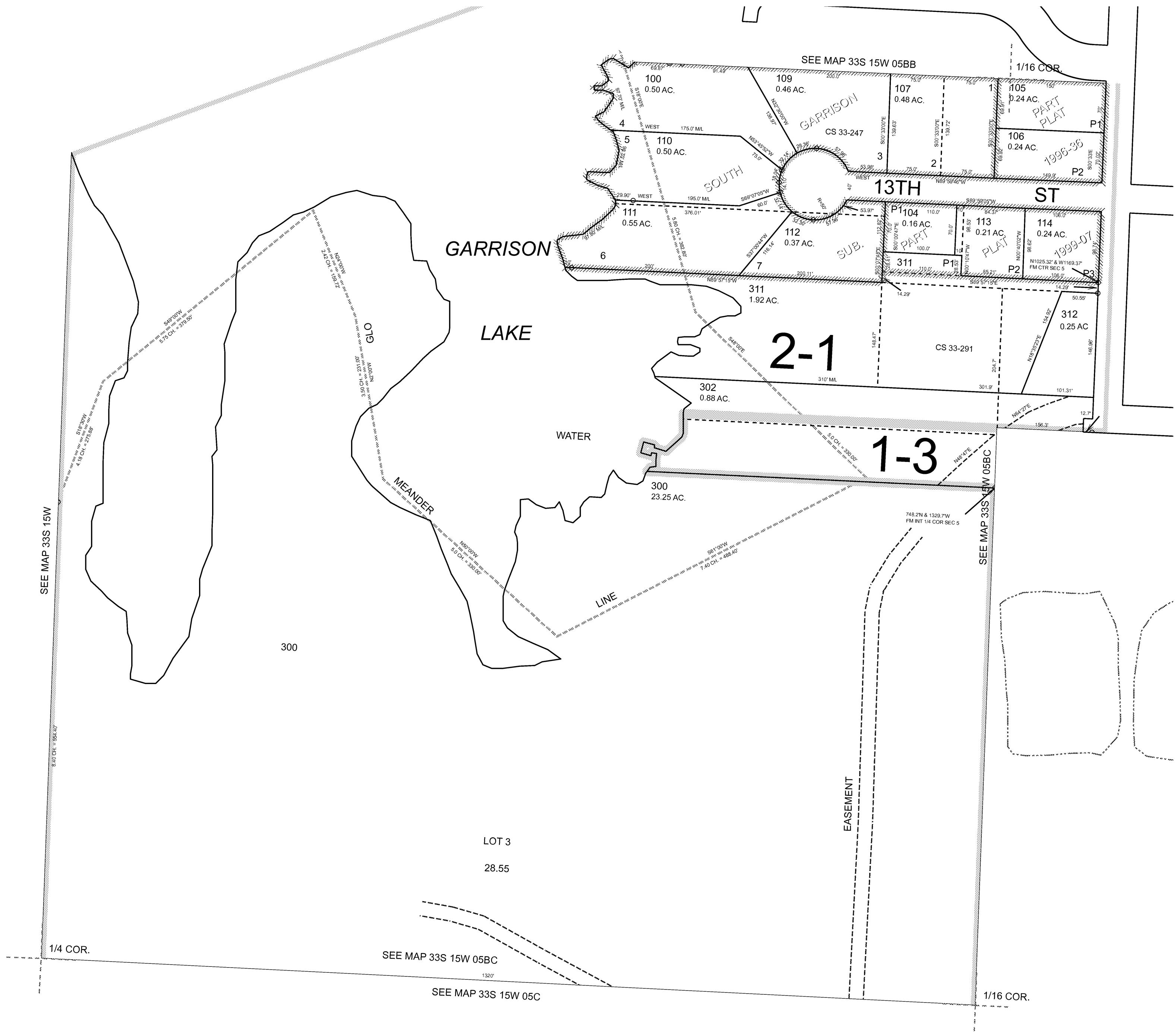


S.W. 1/4 N.W. 1/4 SEC. 5 T.33S. R.15W. W.M.
CURRY COUNTY

1" = 100'

33S15W05BC
PORT ORFORD

- CANCELLED:
- 101
- 102
- 200
- 310
- 103
- 108



Revised: RAA
5/26/2009

PORT ORFORD
33S15W05BC