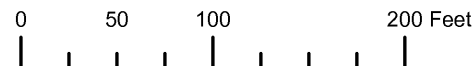


THIS MAP WAS PREPARED FOR ASSESSMENT PURPOSE ONLY



N.W. 1/4 N.W. 1/4 SEC. 5 T.33S. R.15W. W.M. CURRY COUNTY

1" = 100'

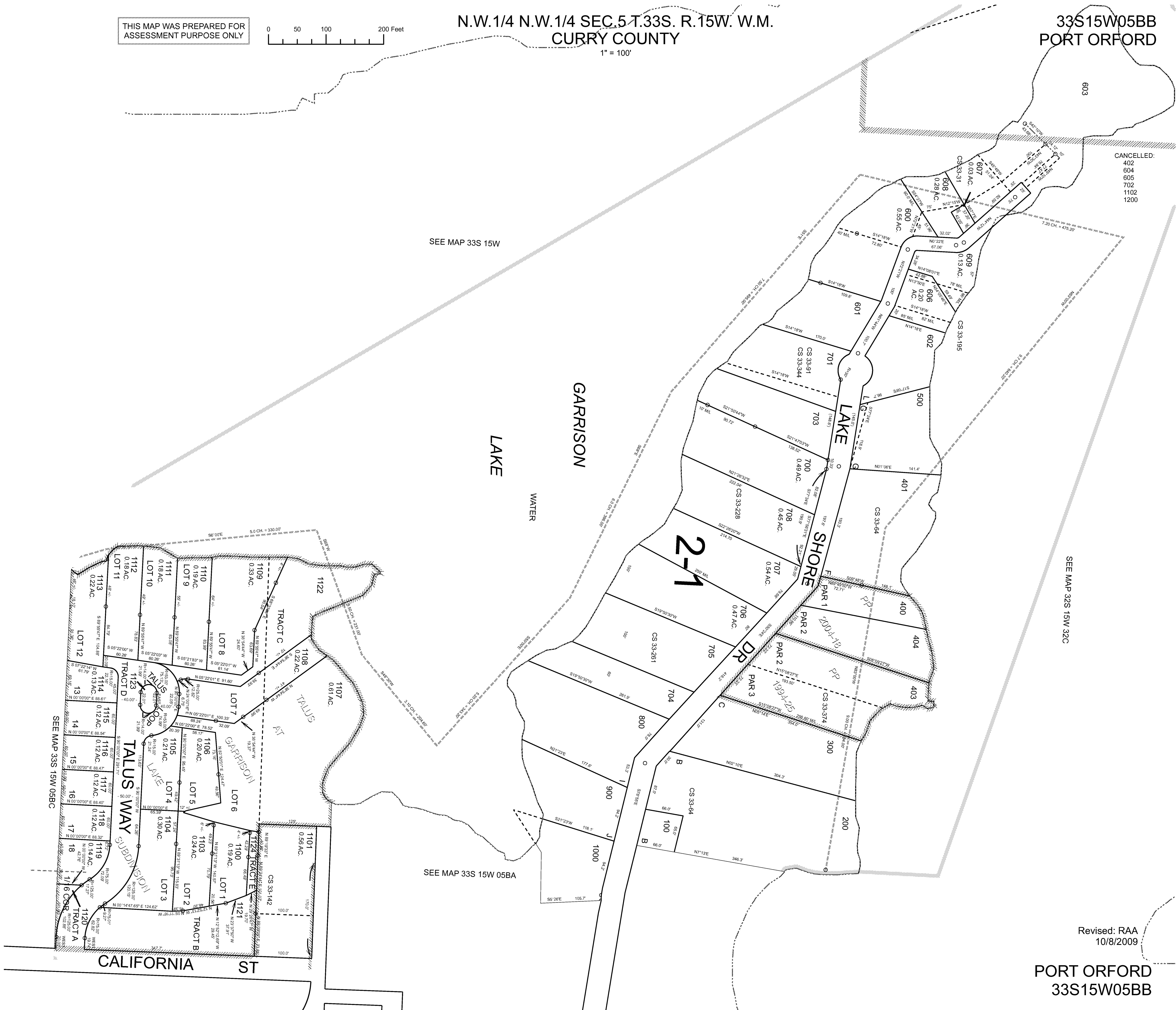
33S15W05BB PORT ORFORD

CANCELLED:
402
604
605
702
1102
1200

SEE MAP 33S 15W

SEE MAP 32S 15W 32C

SEE MAP 33S 15W 05BA



Revised: RAA
10/8/2009

PORT ORFORD
33S15W05BB