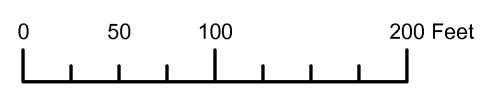
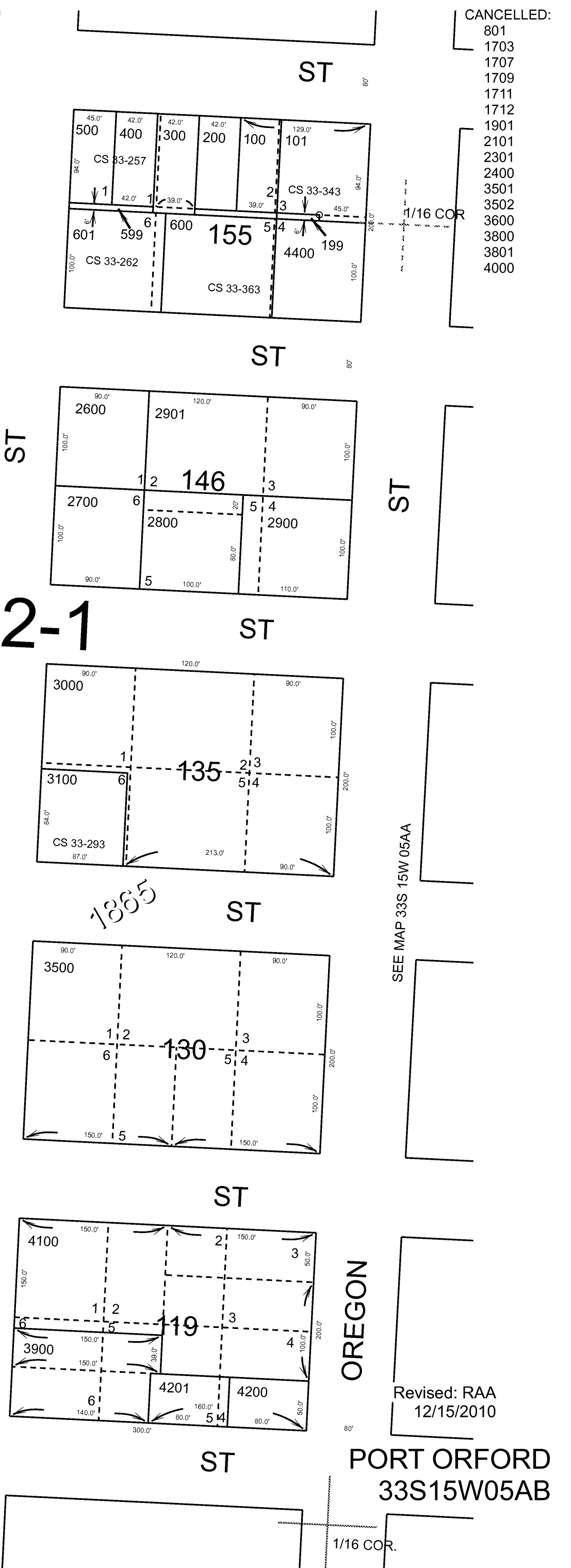
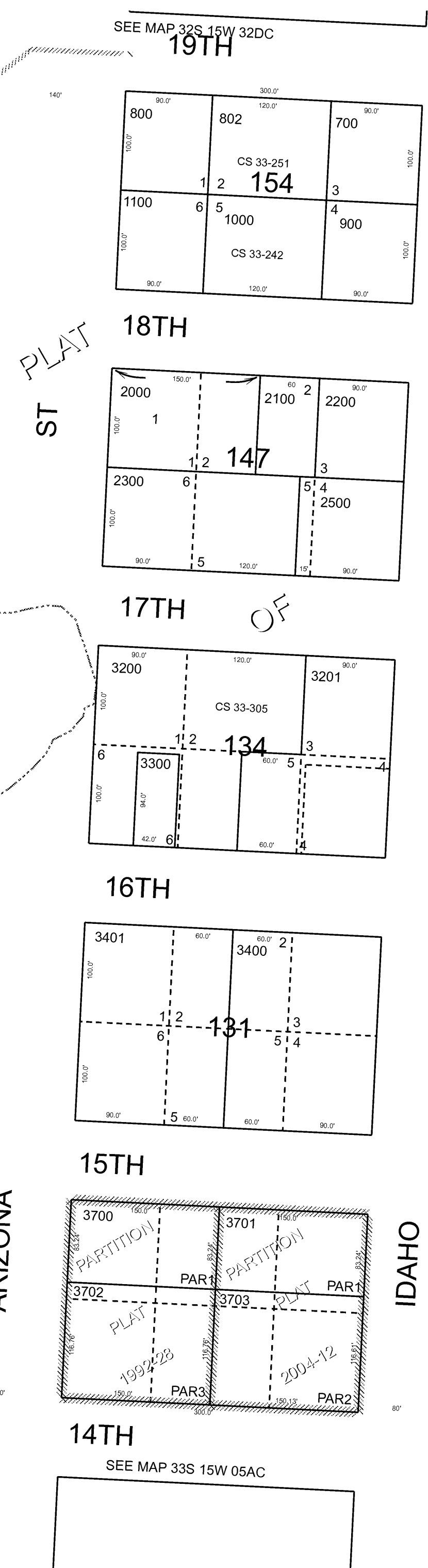
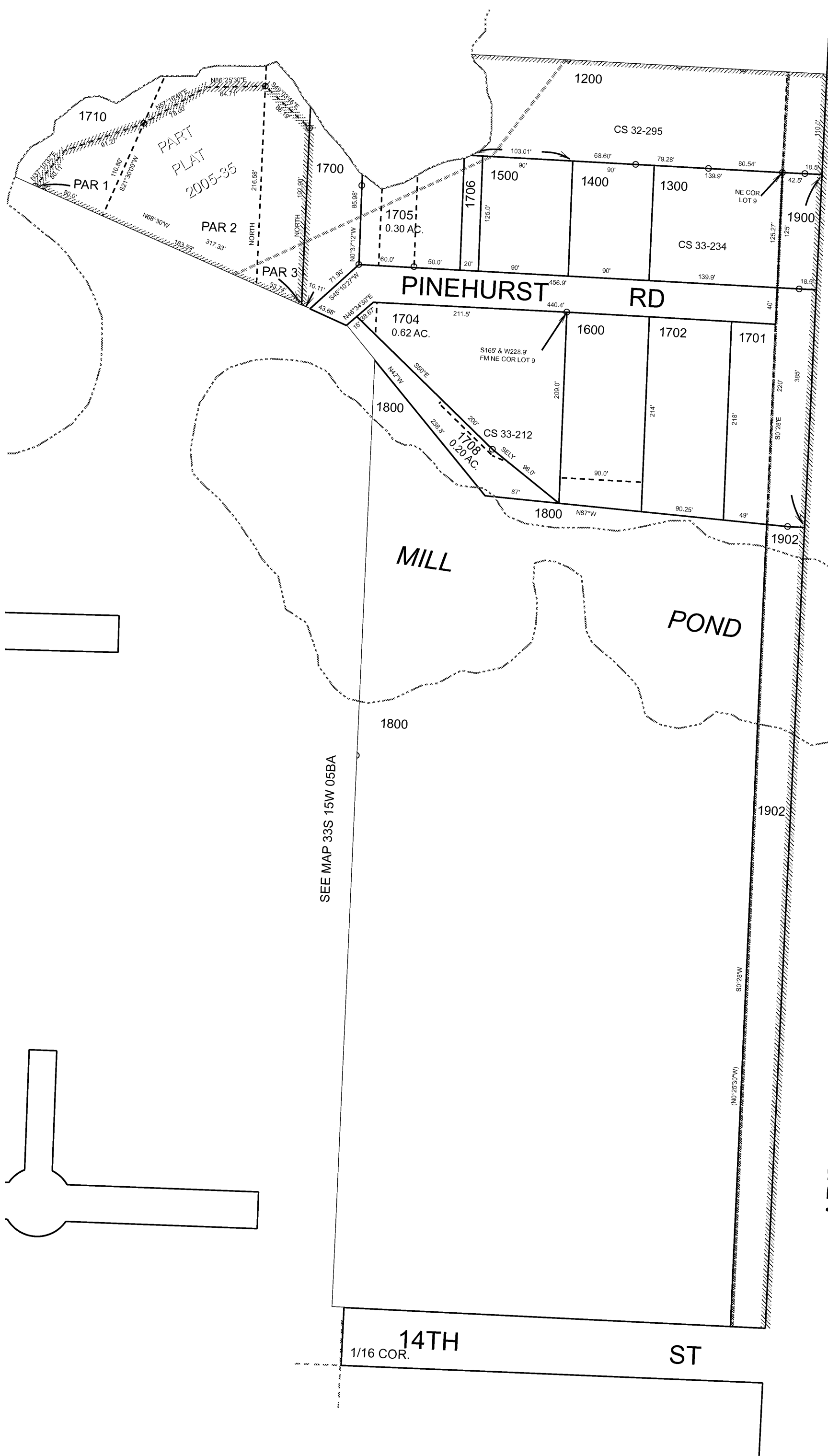


THIS MAP WAS PREPARED FOR ASSESSMENT PURPOSE ONLY



N.W.1/4 N.E.1/4 SEC.5 T.33S. R.15W. W.M.
CURRY COUNTY
1" = 100'

33S15W05AB
PORT ORFORD



- CANCELLED:
- 801
 - 1703
 - 1707
 - 1709
 - 1711
 - 1712
 - 1901
 - 2101
 - 2301
 - 2400
 - 3501
 - 3502
 - 3600
 - 3800
 - 3801
 - 4000

Revised: RAA
12/15/2010

PORT ORFORD
33S15W05AB