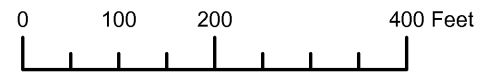


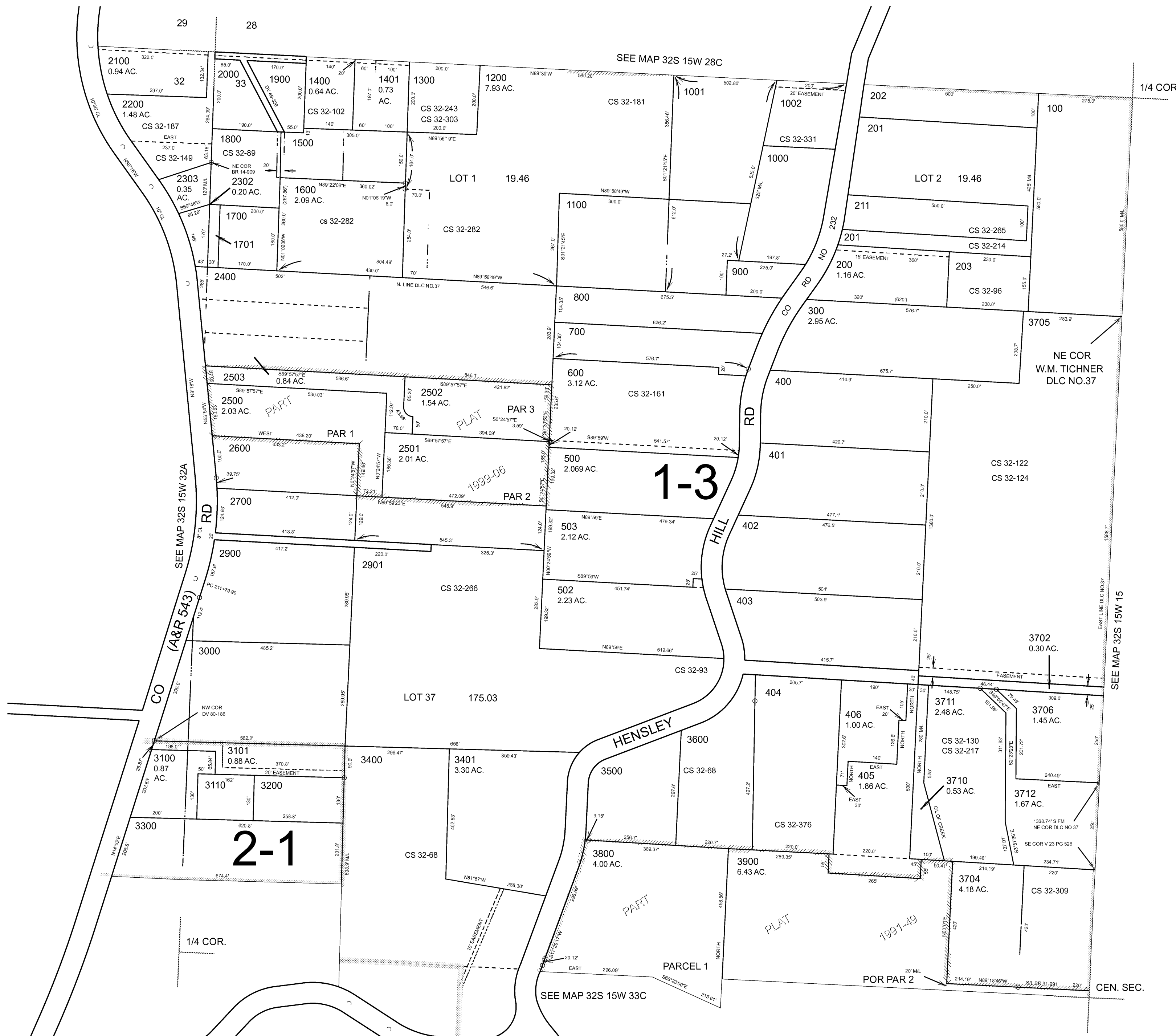
THIS MAP WAS PREPARED FOR ASSESSMENT PURPOSE ONLY



N.W. 1/4 SEC. 33 T.32S. R.15W. W.M. CURRY COUNTY 1" = 200'

32S15W33B

- CANCELLED:
- 501
- 504
- 1003
- 1501
- 1601
- 2300
- 2301
- 2800
- 3700
- 3701
- 3703
- 3707 THRU 3709
- 3713
- 3714



Revised RAA 1/11/2008

32S15W33B