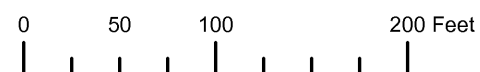


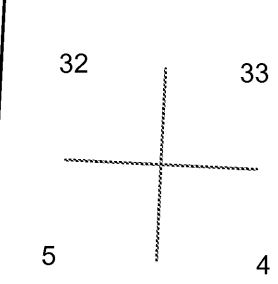
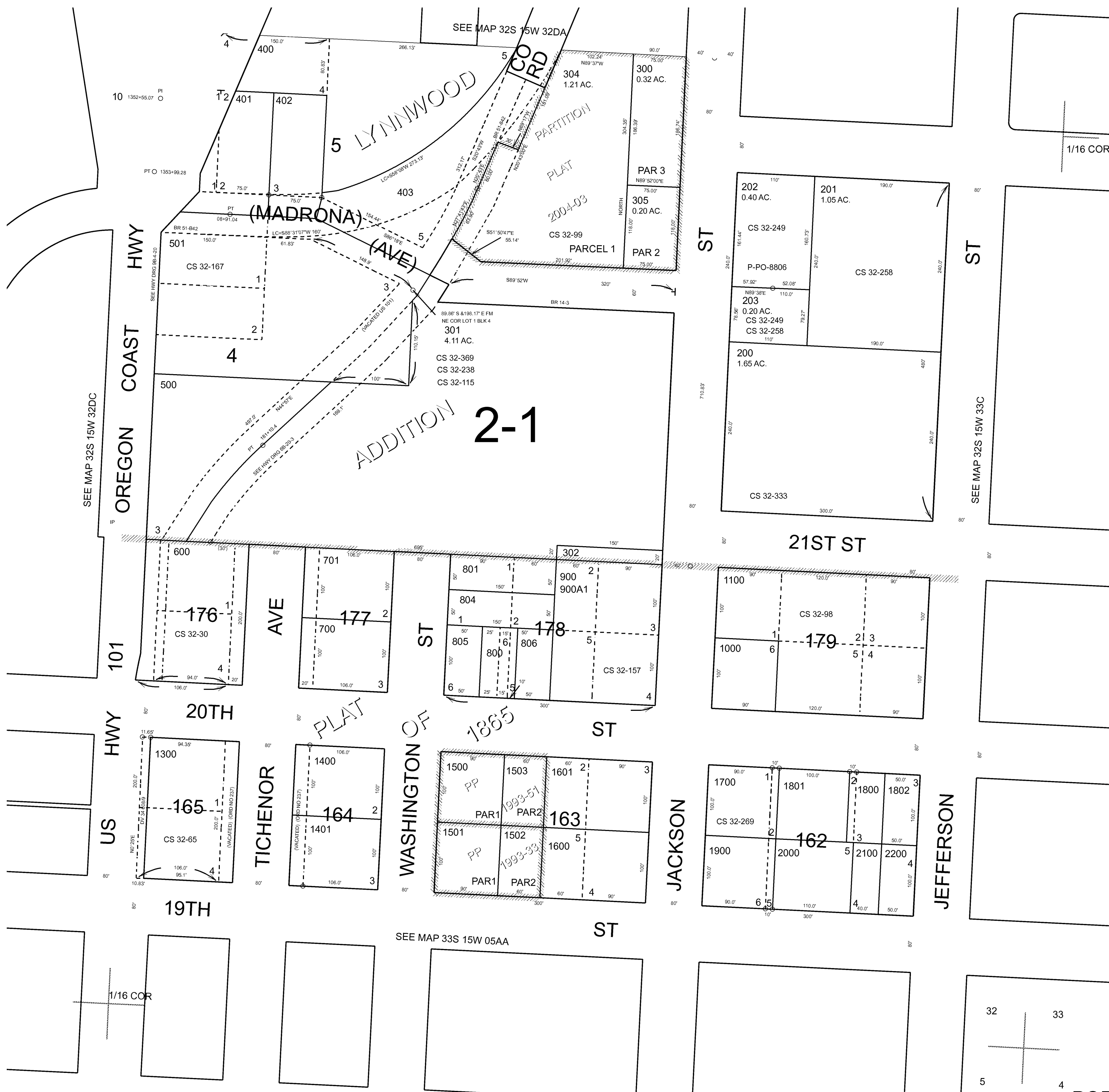
THIS MAP WAS PREPARED FOR ASSESSMENT PURPOSE ONLY



S.E. 1/4 S.E. 1/4 SEC. 32 T.32S. R.15W. W.M.
CURRY COUNTY
1" = 100'

32S15W32DD
PORT ORFORD

- CANCELLED:
- 100
 - 303
 - 802
 - 803
 - 1200
 - 1810
 - 2300 THRU 2900



Revised RAA
1/14/2008
PORT ORFORD
32S15W32DD