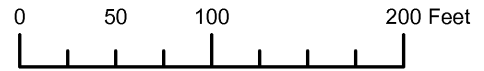


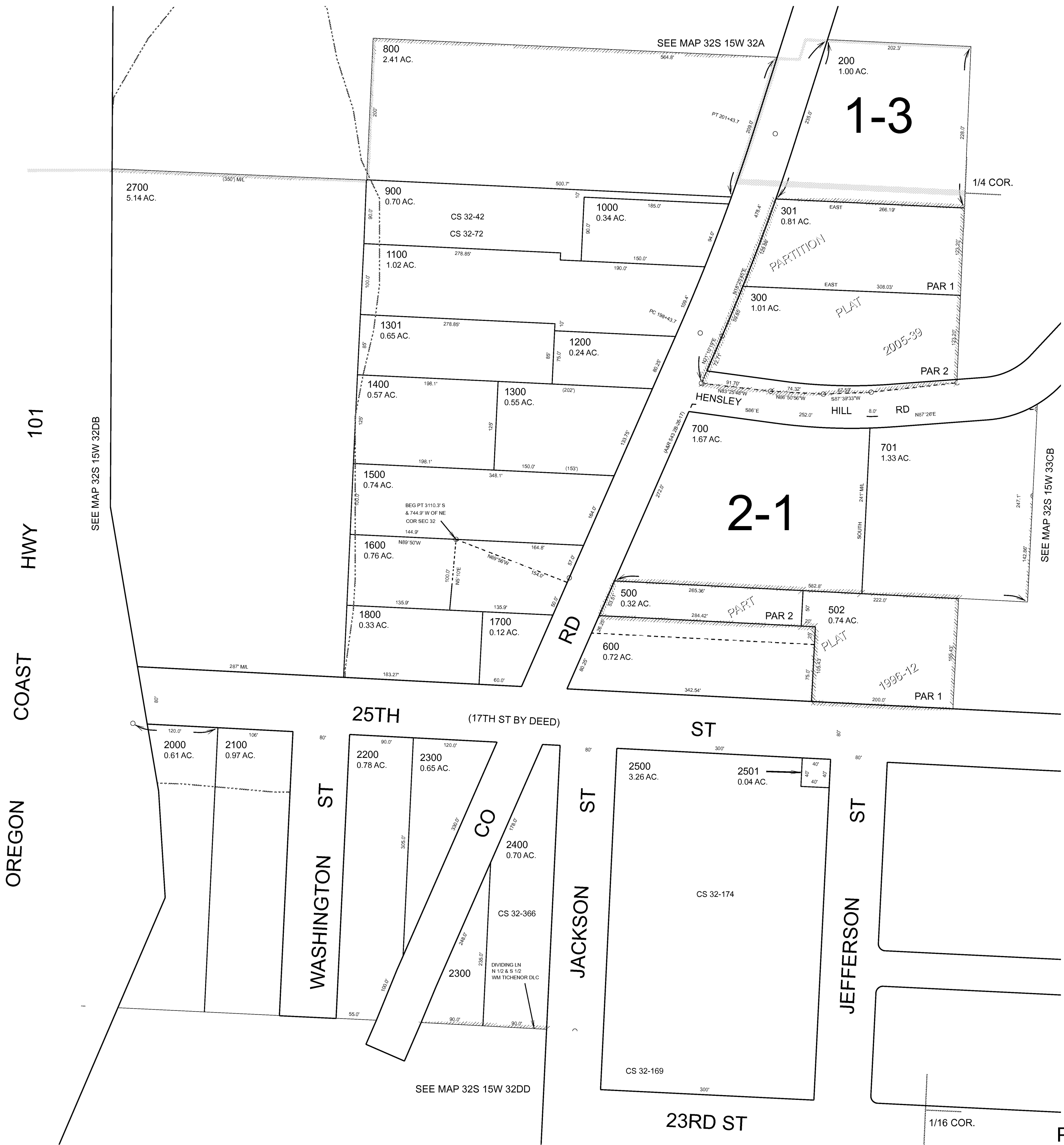
THIS MAP WAS PREPARED FOR ASSESSMENT PURPOSE ONLY



N.E. 1/4 S.E. 1/4 SEC. 32 T.32S. R.15W. W.M. CURRY COUNTY 1" = 100'

32S15W32DA PORT ORFORD

- CANCELLED:
- 100
- 101
- 400
- 401
- 501
- 1900
- 2600
- 2601



Revised RAA 1/11/2008 PORT ORFORD 32S15W32DA